

Route 202

Updated: Oct. 2017

Junction with Route 73 to Mercur, May 14, 1935. *Withdrawn* as route number, 1953.

1961 Description:

**(*A) Scanned) From Route 4 northerly, via Main Street to Route 201 in Salt Lake City.

1962 Description:

From Route 171 via Main Street to Route 201 in Salt Lake City.

Approved by 1963 Legislature:

1965 Description:

From Route 171 northerly via Main Street to Route 201 in Salt Lake City.

Approved by the 1965 Legislature:

1967 Description:

*(B) *Withdrawn* as a Route Number by the **1967 Legislature**.

1969 Legislature:

Added to the State System by the **1969 Legislature**.

1969 Description:

From SR-201 near Garfield northwesterly via the Garfield cut-off to SR-2 (Interstate 80).

1979 Legislature Description:

From Route 201 near Garfield northwesterly via the Garfield Cut-off to Route 80.

1981 Legislature: Description remains the same.

1983 Legislature: Description remains the same.

1985 Legislature: Description remains the same.

1986 Legislature: Description remains the same.

1987 Legislature: Description remains the same.

1988 Legislature: Description remains the same.

1990 Legislature: Description remains the same.

1992 Legislature: Description remains the same.

1993 Legislature: Description remains the same.

1994 Legislature: Description remains the same.

1995 Legislature: Description remains the same.

1996 Legislature: Description remains the same.

1997 Legislature: Description remains the same.

1998 Legislative Description:

From Route 201 near Garfield northwesterly through the Garfield Cutoff to Route 80.

Route 202 Cont.

1999 Legislature: Description remains the same.

2000 Legislature: Description remains the same.

2001 Legislature: Description remains the same.

2002 Legislature: Description remains the same.

2003 Legislature: Description remains the same.

2004 Legislature: Description remains the same.

2005 Legislature: Description remains the same.

2006 Legislature: Description remains the same.

2007 Legislature: Description remains the same.

2008 Legislature: Description remains the same.

2011 Legislature: Description remains the same.

2016 Legislature: Description remains the same.

2017 Legislature: Description remains the same.

* Refers to resolution index page following.

** Refers to Scanned Computer Resolution index on the following page.

Route 202

COUNTY/VOLUME & RESOLUTION NUMBER

A. Salt Lake Co. 1/38

B. Salt Lake Co. 2/5

C. Salt Lake Co. 11/5

DESCRIPTION OF RESOLUTION CHANGE

- | | |
|-----------------------------------|---|
| (A). New Road - | From Route 4 northerly via Main Street to Route 201. |
| (B). Deletion - | SR-202 in its Entirety. |
| (C). Abandonment and Re-alignment | Beginning portion of SR-202 Re-aligned and old beginning alignment abandoned. |

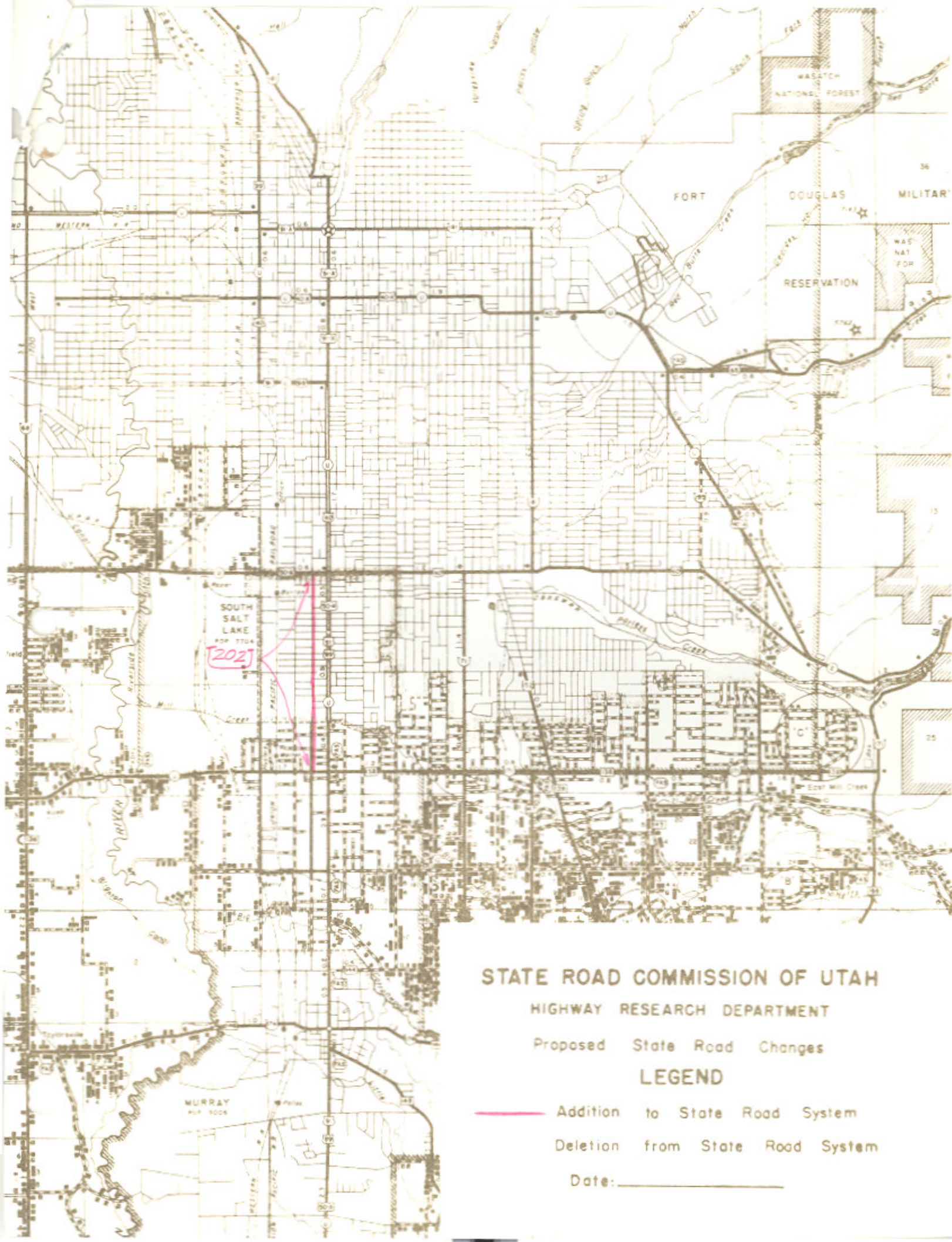
RECOMMENDED LEGISLATIVE CHANGES IN STATE ROAD SYSTEM

ROUTE 202

Previous Description: (New Road)

Recommended Description: From route 4 northerly via
main street to route 201.

Comments: *Approved by* ~~Recommended~~ for Commission Action. *May 8 1961*



STATE ROAD COMMISSION OF UTAH

HIGHWAY RESEARCH DEPARTMENT

Proposed State Road Changes

LEGEND

- Addition to State Road System
- ~~—~~ Deletion from State Road System

Date: _____

Resolution

Abandonment and Re-alignment of a Portion of SR-202 **Salt Lake County**

WHEREAS, Utah Code Section 72-4-102 provides for additions or deletions from the state highway system, Section 72-4-103 provides for the deletion of highway from state highway system, and Section 72-4-104 provides for disposition of highways portions realigned; and

WHEREAS, the Utah Department of Transportation has designed and built project F-0201(29)0 which includes the realignment of a portion of SR-202 in Salt Lake County; and

WHEREAS, The Region Two Director requests SR-202 beginning at the existing intersection of SR-201 and SR-202 and following the existing SR-202 alignment northwesterly for approximately 0.55 miles to the intersection with the SR-202 realignment be abandoned and following said realignment southwesterly for approximately 0.34 miles to the existing SR-201 be added to the state highway system as a portion of SR-202; and

WHEREAS, Program Development reviewed the information and concurs with UDOT's Region Two Director's request.

NOW THEREFORE, be it resolved as follows:

1. The existing portion of SR-202 extending from the existing intersection with SR-201 northwesterly for approximately 0.55 miles to the realigned SR-202 is abandoned and will be removed from the state highway system.
2. The road built by UDOT, Federal Aid Project F-0201(29)0, traversing northeasterly from the existing alignment of SR-201 for approximately 0.34 miles to the intersection with the existing SR-202 alignment will be placed on the state highway system as the new alignment portion of SR-202.

Abandonment and Re-alignment of a portion of SR-202
Salt Lake County

3. SR-202 will be described as follows: beginning at SR-201 and extending northeasterly for approximately 0.34 miles to the existing alignment of SR-202, and continuing northwesterly along the existing alignment of SR-202 for approximately 1.05 miles to Interstate 80.

4. The accompanying map marked Exhibit "A" is incorporated by reference.

Dated on this 21st day of May 2015

UTAH TRANSPORTATION COMMISSION

Jeffrey D. Holt, Chairman

J. Kent Millington, Commissioner

Meghan Z. Holbrook

Meghan Z. Holbrook, Commissioner

Wayne K. Barlow

Wayne K. Barlow, Commissioner

Dannie R. McConkie

Dannie R. McConkie, Commissioner

Naghi-Zeenati

Naghi Zeenati, Commissioner

Gayle F. McKeachie

Gayle F. McKeachie, Commissioner

Attest:
Secretary

Jeanne Anderson

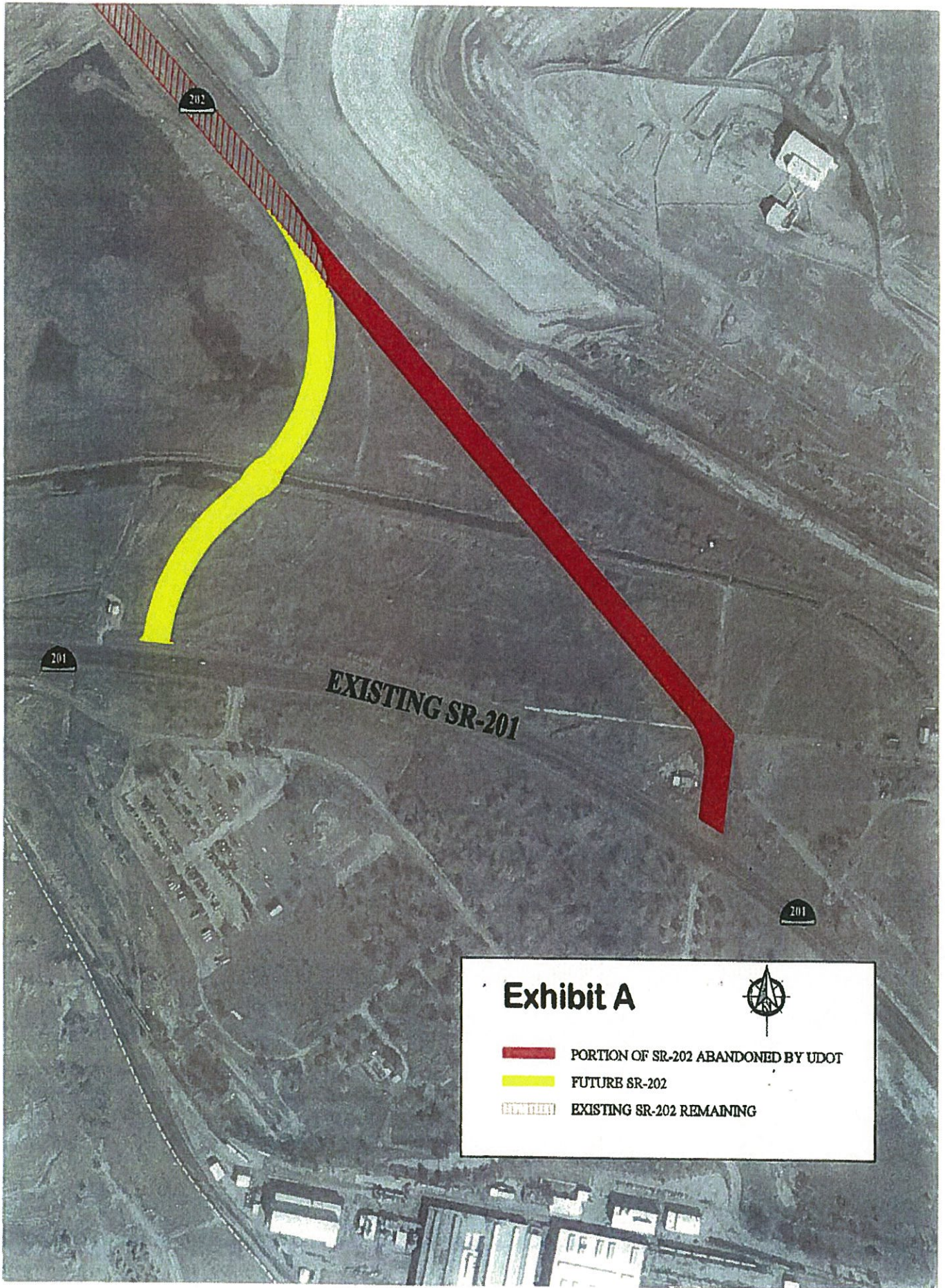





Exhibit A



-  PORTION OF SR-202 ABANDONED BY UDOT
-  FUTURE SR-202
-  EXISTING SR-202 REMAINING